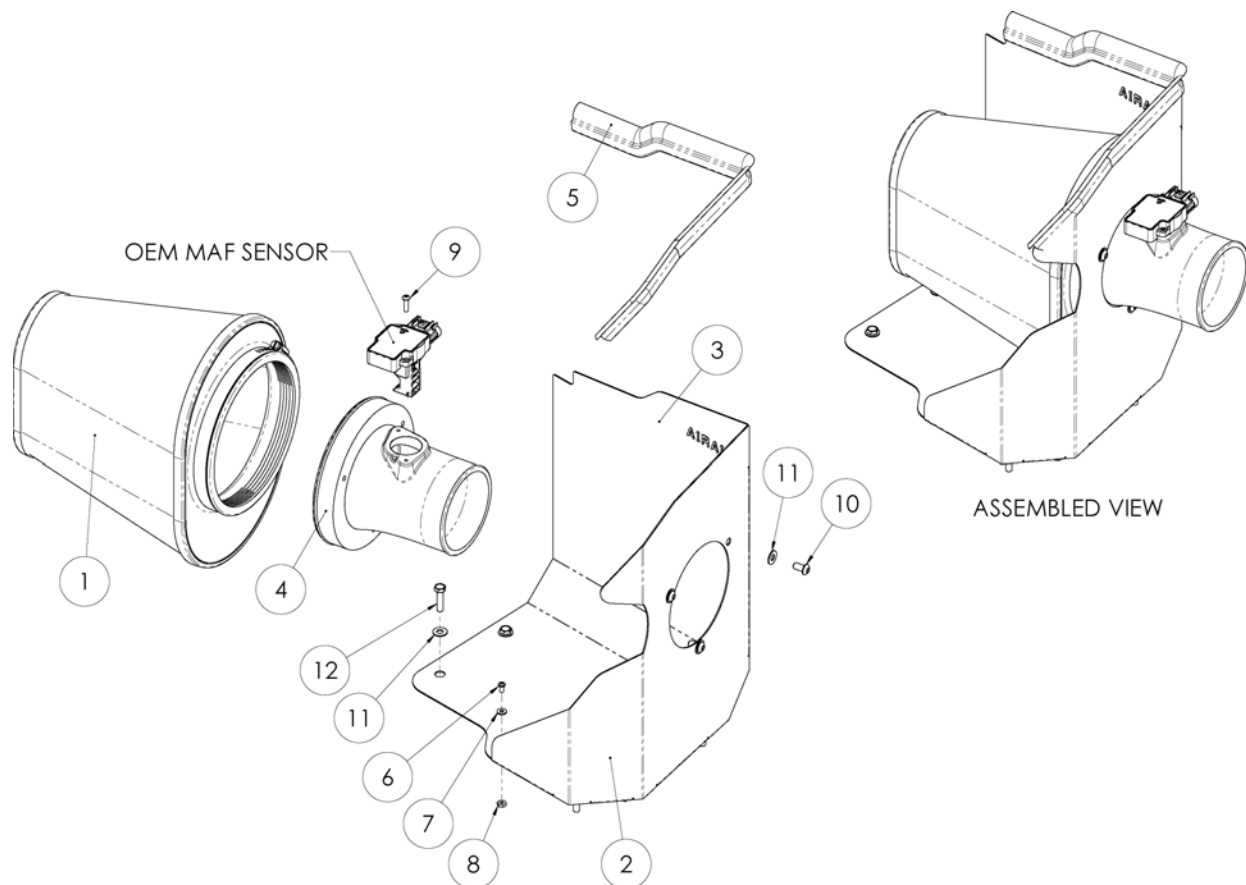




INTAKE SYSTEMS

Installation Instructions
Part Number 200-244
2009-2010 Chevrolet Silverado
Tahoe/Suburban/Avalanche
GMC Sierra
Yukon/Yukon XL
Denali/Denali XL
Cadillac Escalade/ESV/EXT
4.3L, 4.8L, 5.3L, 6.0L, 6.2L



Packing List:

#1	720-472	Airaid Premium Filter	1
#2	KIT233MAFDAC	MAF Panel	1
#3	KIT196RRDAMC	Rear Air Dam Panel	1
#4	KIT233A	Air Filter Adapter	1
#5	KITWSTRIP02	Weather Strip 20 3/4"	1
	KIT244HP	Hardware & Instructions	1
#6	KIT6C31MXPPZ	6-32 x 5/16" Screw	5
#7	KIT6NWSAPZ	#6 Flat Washer	5
#8	KIT6CNKEPZ	6-32 Keps Nut	5
#9	KIT10BHCP63	8-32 x 5/8" Button Head Bolt	2
#10	KIT15DHC3050	1/4 - 20 x 1/2" Button Head Bolt	3
#11	KIT09FWZ019	1/4" Flat Washer	7
#12	KIT60C250HCS	M6 - 1 x 25 Hex Bolt	4

Tools Required For Installation:

5/16", 10mm Sockets
 Ratchet & Extension
 Phillips Screwdriver
 3/32", 5/32" Allen Wrench
 T15 Torx Bit



1. Disconnect the negative battery cable.

Using a T15 Torx bit, remove the two screws that hold the Mass Air Flow (MAF) sensor to the airbox lid. Next, loosen the hose clamp that secures the intake tube to the lid.



2. A.) Without disconnecting the wiring harness, remove the MAF sensor from the airbox lid and swing it back out of the work area. B.) Now disconnect the factory air intake tube from the airbox lid, and move it out of the work area. **V-8 Models:** Remove the factory intake tube for ease of install.



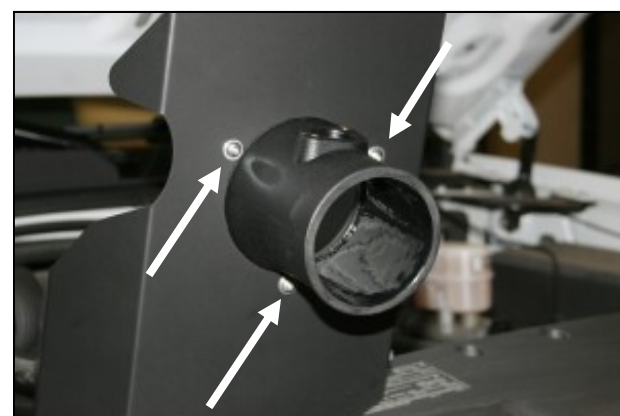
3. Rock the factory airbox back and forth while lifting up on it, and remove it from the vehicle. It is only held in place by grommets.



4. Using a 10mm socket, remove the four bolts that secure the factory airbox mounting plate. Now remove the mounting plate from the vehicle.



5. Assemble the two Cold Air Dam (CAD) panels (#2 & #3) using five 6-32 Phillips screws (#6) five flat washers (#7), and five keps nuts (#8) as shown. Make sure that panel #2 is located inside of panel #3.



6. Install the filter adapter into panel #3 as shown, using three 1/4-20 x 1/2" button head bolts (#10), and three flat washers (#11).



7. Install the assembled CAD into the vehicle where the mounting plate was removed in step #4. Secure the CAD to the vehicle using four 6mm bolts (#12) and four flat washers (#11). Do not over tighten the bolts.



8. Reinstall the MAF sensor onto the filter adapter using two 8-32 x 5/8" button head screws (#9). **Do Not Use The Factory Screws!** Reconnect the factory air intake tube to the filter adapter and tighten the hose clamp. **V-8 vehicles:** Reinstall the air intake tube between the throttlebody and the filter adapter. Make sure to reconnect the crankcase breather hose.



9. Install the Airaid Premium Filter (#1) onto the filter adapter and tighten the hose clamp. Next install the weather strip (#5) onto the top of the CAD as shown. Start at the right fender and work your way around towards the radiator.

10. Double check your work!

Make sure there is no foreign material in the intake path. Make sure all clamps, hoses, bolts, and screws are tight.

11. Reconnect the negative battery cable!

Thank you for purchasing the Airaid Intake System. Contact Airaid @ (800) 498-6951 8:00 AM - 5:00 PM MST weekdays for questions regarding fit or instructions that are not clear to you. Your Airaid Intake System was carefully inspected and packaged. Check that no parts are missing, or were damaged during shipping. If any parts are missing, contact Airaid. The air filter element is protected from direct exposure to water and debris; care should be taken not to drive through deep water. WATER INGESTION IS THE DRIVERS RESPONSIBILITY! The air filter is reusable and should be cleaned using the Airaid Filter Tune-Up Kit periodically.

Before!



After!



Don't Forget Your AIRAID Filter Tune-Up Kit!



P/N 790-551 Aerosol Spray
P/N 790-550 Squeeze Spray



Instructions Revision
Date: 12/16/09